

GOVT. COLLEGE OF ENGINEERING, KARAD

Dist. Satara, Maharashtra, India Pin-415 124.

Te. No.91-02164-271711,27414, 27415

Fax No.91-02164-271713

Website : www.gcekarad.ac.in

No. : GCOEK/Workshop/2021/283

Date: 21 JAN 2021

To,
Notice Board

QUOTATION

Sub : Quotation for Laboratory Table. (Due Date 04.02.2021)

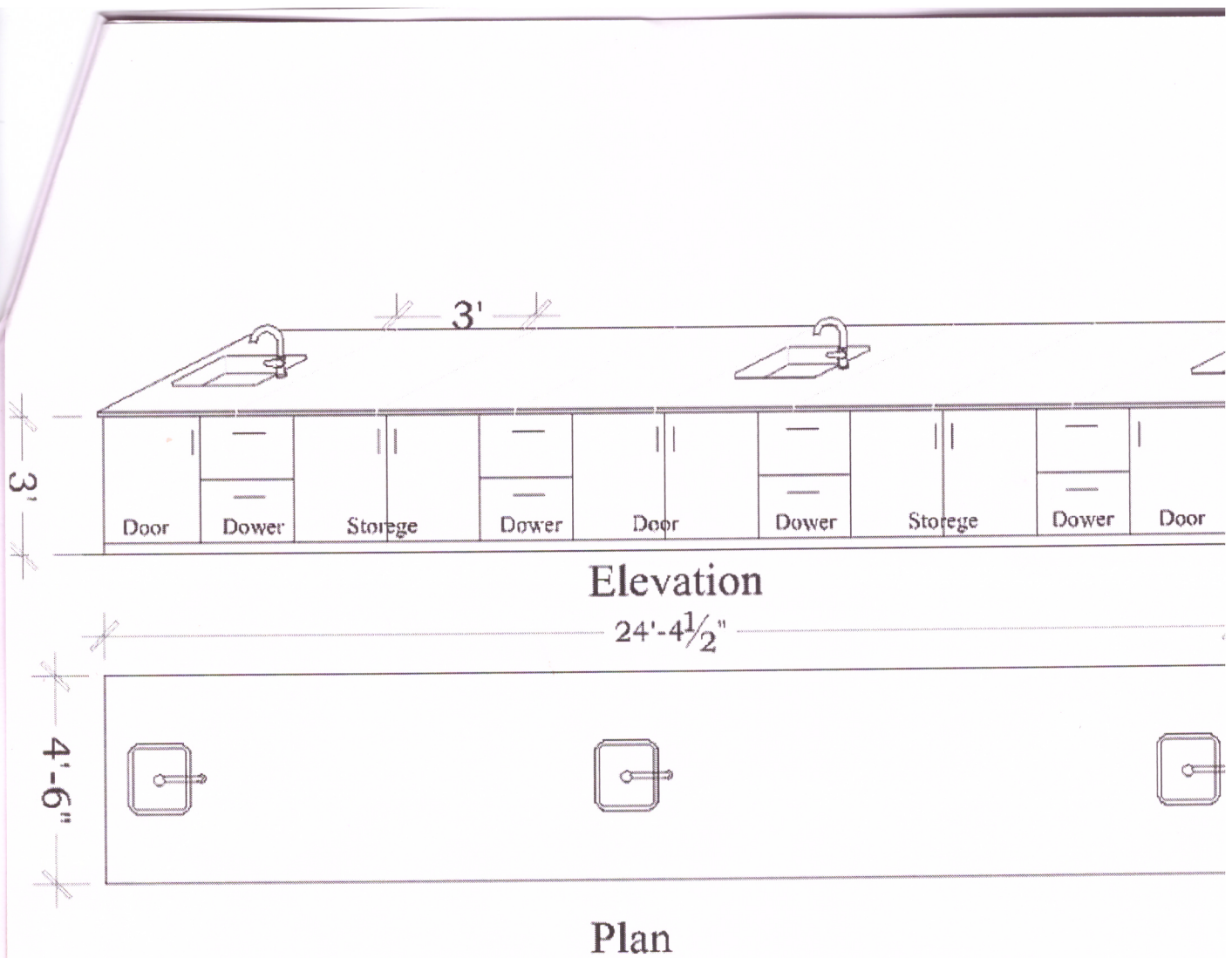
Scaled Quotations are invited from eligible and interested manufacturers/dealers/distributors/ for the following items on the terms and conditions mentioned below.

Sr. No	Particulars	Qty.	Rate Per No.	GST %	Total Cost per No.
1	Laboratory Table Size- 24' 4.5" (Length), 3 feet (height) Top- 4' 6" (Drawing attached) Material- Plywood 18mm, 710 grade, ISI mark. 1mm sunmica, inside color (oil paint) Premium quality hardware- telescope, hinges Top- 18mm Telephone black granite. 16" x 18" S.S. Finish sink- 3 No. Gravity taps	01 .			

Terms & Condition

1. The quotation should be sent to **"The Principal, Government College of Engineering, Karad"** on or before **04.02.2021 at 5.30PM.**
2. Quotations will be opened at 3.00 PM on 05.02.2021.
3. Materials should be quoted for standard makes and minimum pkgs.
4. Quotation validity for at least 45 days from the date of opening.
5. Delivery at F.O.R. Workshop , Govt. College of Engineering Karad.
6. Delivery period 2 weeks from date of supply order.
7. 100% payment after satisfactory delivery & installation.
8. No extra charges will be paid for cartage etc. the material rejected and replaced.
9. After delivery quality conformance undertaking of equipment/machinery
10. The undersigned reserves the right to accept or reject any offer or all offers without assigning any reason thereof.


For Principal



*Furniture

18 mm 710 Grade ISI mark Plywood, outer side
1mm sun mika, inside color (oil Paint) Premium
Quality Hardware, (Telescope, hinges)

*Top

18mmTelephone black Granite

*Plumbing

1/2", 1 1/2" finolex Pipes 16"x 18" s. s. finish Sink
Gravity taps,