



Phone. No. (02164) 272414, 8275706613  
Web: <http://gcekarad.ac.in>  
Email: [principal@gcekarad.ac.in](mailto:principal@gcekarad.ac.in),  
[principal.gcekarad@dtmaharashtra.gov.in](mailto:principal.gcekarad@dtmaharashtra.gov.in)

Govt. of Maharashtra  
**GOVT. COLLEGE OF ENGINEERING, KARAD**  
(An Autonomous Institute of Govt. of Maharashtra)  
Vidyanagar, Karad -415124 Dist.- Satara

No. GCEK/SAE H Bja/2025/ 3419

Date : 14 NOV 2025

To,

College Website/Notice Board  
Govt. College of Engineering, Karad

**Sub: - Quotation Invitation for Rack and pinion assembly and wheel Assembly for SAE H Baja.**

With Reference to the subject maintained above, you are requested to quote your rates for the Rack and pinion assembly and wheel Assembly for SAE H Baja for this Institute. The details are as per list attached. Your quotation should reach this office on or before 20.11.2025 Prices should be quoted F.O.R. Institute (Karad). Rate should be quoted with all taxes stated separately. Your Quotation will be valid up to 90 days from the date of opening. The quotation should be sent in sealed envelope. On the top of envelop should write

**"QUOTATION FOR GOVT. COLLEGE OF ENGG. KARAD DUE ON 20/11/2025"**

Sr. No.	Name of the Component	Qty.	Per Unit Cost	Total Cost
1	Rack and pinion Assembly	1		
2	Front Right Assembly	1		
3	Front Left Assembly	1		
4	Rear Assembly	2		
	GST %			
	Total Amount			

The quotation will be opened on 21/11/2025 at 11:00 AM or next working day

Principal,  
Government College of Engineering, Karad

**Terms and Conditions:**

1. Quotation should be submitted in sealed envelope. Should be sent to The Principal, Govt. College of Engineering, Karad. The goods should be supplied F.O.R. Institute
2. Quotation Valid for 90 days from the date of opening.
3. Delivery Period 8 Week from the date of PO
4. 100% Payment after Delivery.
5. The undersigned reserves the right to accept or reject any offer or all offers without assigning any reason thereof.



Date :- 4<sup>th</sup> Nov. 2025

To,  
The Principal,  
Government College of Engineering, Karad.

Subject: Permission for Quotation calling of Rack and pinion assembly and Wheel assembly for SAE H Baja.

Respected Sir,

I am requesting the initiation of quotation call for the procurement of Rack and pinion assembly and Wheel assembly required for SAE (Team Demons) club. This is essential for supporting ongoing project. Both types of the components are not OEM and we require to manufacture the components as per our CAD design. The design requirements are mentioned on the drafts. These design drafts are attached to the letter.

Wheel assembly consists of knuckle, brake disc and the hub. There are 3 types of assemblies Front right, Front left and Rear respectively.

Quantity required:-

Rack and pinion assembly	1
Front Right assembly	1
Front Left assembly	1
Rear assembly	2

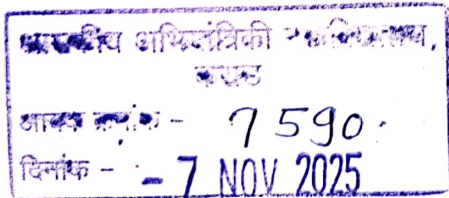
Estimated cost as per our budget

Rack and pinion:- Rs. 16,000/-

Wheel Assembly:- Rs. 1,25,000/-

I kindly request your approval to call for quotations from multiple vendors as per the institutional procurement policies.

Thank you for your attention and consideration.



Prof. R B Teltumade  
(Faculty Advisor)

DEAN  
Student Welfare  
Govt. College of Engineering  
Karad (Dist.- Satara)

Yours Sincerely,

Sudarshan Sonawane  
(Team Captain)

Prof. Dr. S J Wagh  
(The Principal)











D

C

B

A

D

C

B

A

MATERIAL :-

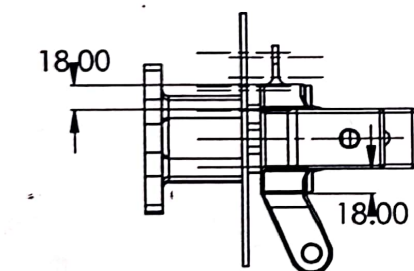
BRAKE DISC : SS420

Hub : Al 7075-T6

Knuckle : Al 7075-T6

QUANTITY : 1

• Wheel Assembly  
- front left



UNLESS OTHERWISE SPECIFIED:  
DIMENSIONS ARE IN MILLIMETERS  
SURFACE FINISH:  
TOLERANCES:  
LINEAR:  
ANGULAR:

FINISH:

DEBURR AND  
BREAK SHARP  
EDGES

DO NOT SCALE DRAWING

REVISION

	NAME	SIGNATURE	DATE		
DRAWN					
CHK'D					
APPV'D					
MFG					
Q.A					

TITLE:

MATERIAL:

DWG NO.

LEFT WHEEL ASSMBLY

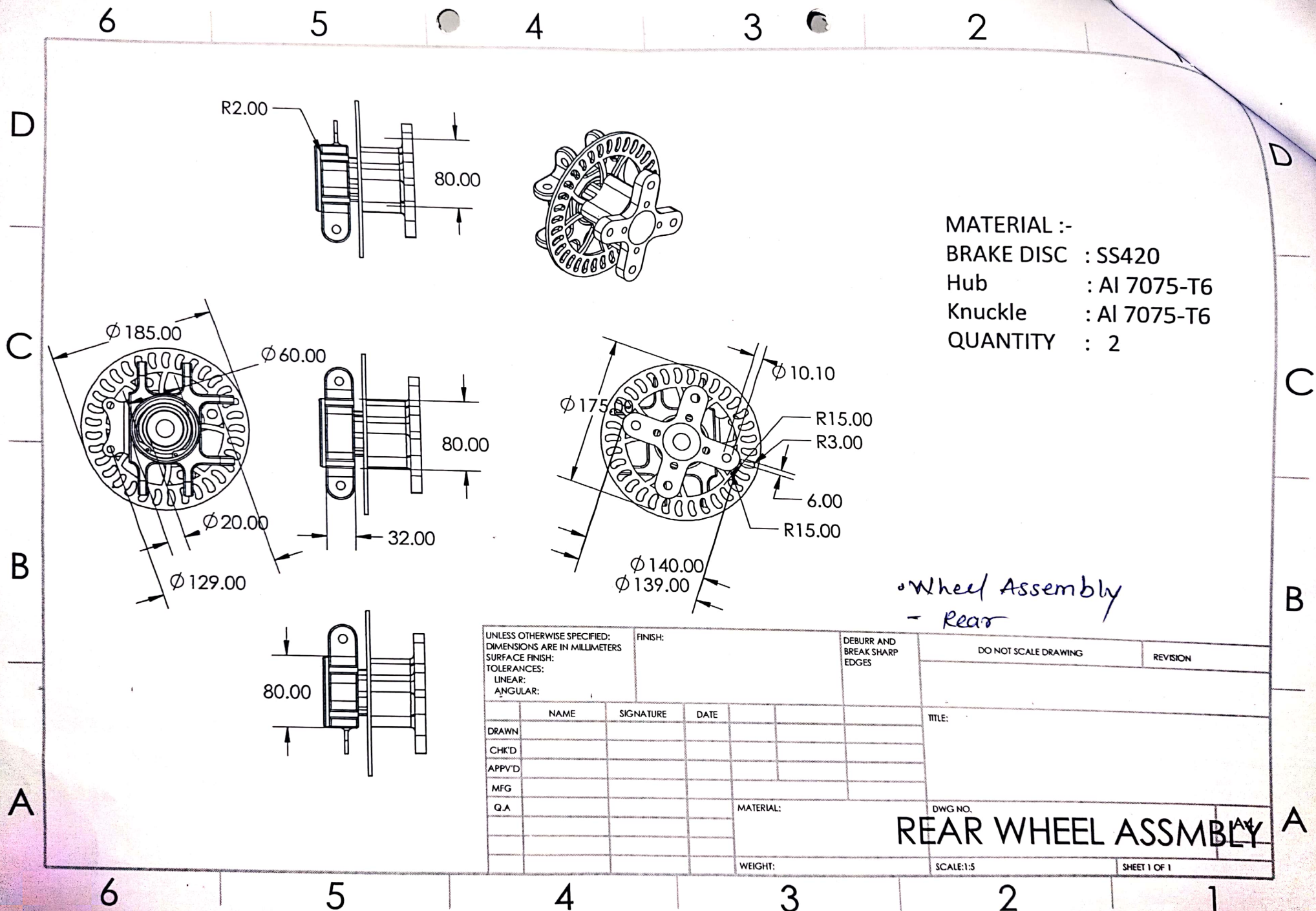
WEIGHT:

SCALE:1:5

SHEET 1 OF 1







UNLESS OTHERWISE SPECIFIED: DIMENSIONS ARE IN MILLIMETERS SURFACE FINISH: TOLERANCES: LINEAR: ANGULAR:				FINISH:		DEBURR AND BREAK SHARP EDGES		DO NOT SCALE DRAWING		REVISION	
NAME				SIGNATURE		DATE		TITLE:			
DRAWN											
CHK'D											
APPV'D											
MFG											
Q.A											
MATERIAL:						DWG NO.					
WEIGHT:						SCALE:1:5					
						SHEET 1 OF 1					

**REAR WHEEL ASSMBLY**